

T Bar Pull Handles

The Back-to-Back Fix



Contents · How to fit two of our T Bar pull handles using the back-to-back fixing system





Step 1

Firstly, carefully unpack your product and make sure you have all the necessary components.

For this product you will need to make sure you have the two pull handle plus two back-to-back fixing bolts, which will be drilled through the door and join the two handles either side together.



Step 2

Depending on which size of T Bar pull handle is chosen you will need to decide a position on the door. There is no right or wrong here, just place it where it will be most comfortable to use and where it looks the best.

Once chosen measure how far from the edge of the door you want the pull to sit and mark with pen/pencil. If, like the example above, you have a panel/stile then centre your handle in this area.



Step 3

Depending on the length of handle chosen you need to check your fixing centre measurement and mark the lower point on your door.

In this guide our handle is 900mm long and the fixing centres were 700mm apart. So the second mark we put on the door was 700mm below the mark we made in 'Step 2'. (please check website technical drawing for exact fixings for each product).



Step 4

The next step is to drill the holes needed to fit the back-to-back fixings. So it may be a good time to double check everything is centered and positioned how you want it.

Here we used a 10mm bit and drilled through the entire thickness of the door. Be careful to make sure the hole you are drilling is perfectly horizontal as you will need to pass the bolts through this at the next step.



Step 5

Once both holes have been drilled pass the bolt through the hole using the metal washer (if using on a glass door the rubber pads must be used first then the metal washers).

If installing on a timber door the glass protector pads will not be required.



Step 6

Place one end of the pull handle over the protruding threaded bolt and proceed to manually turn the bolt until it stops.

Depending on the thickness of your door you may need to cut some of the bolt away using a hacksaw but this is a good way to determine how much bolt to remove.



Step 7

Using a tape measure check the amount which will need to be removed from the bolt.

Remove the bolt from the door and proceed to cut away any excess length with a hacksaw. We suggest you do this using a vice to grip the bolt and to help in the process.

Do the same to the second bolt also.

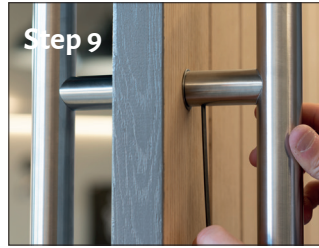


Step 8

Taking the pull handle which doesn't have the grub screw in the fixing arm, place the second metal washer over the threaded bolt, locate the bolt into the arm and screw in until tight.

Use a screw driver for this and not a battery operated driver as you may damage the threads.

Do this for both bolts and the handle will then be fixed to one side of the door.



Step 9

Locate the two grub screws underneath the fixing arms of the second handle and loosen. Place the handle over the ends of the grooved bolts and hold securely in place.

Gently tighten the grub screw ensuring they are positioned in the grooves of the bolt. Do not over tighten but securely fix and this will hold your product perfectly in place with no visible fixings on show.



T Bar Pull Handle - Back-to-back Fix - Fitting Guide

Please note that this fitting guide is just that, a guide, and it requires a certain amount of competence in DIY skills to complete. If unsure about any part of this fitting then please consult a professional. There may be other methods to fit handles like these but we just try to offer simple to follow instructions to help you through.