

T Bar Pull Handles
The Secret Fix

Contents · How to fit one of our T Bar pull handles using the secret fixing system

From the
Anvil[®]
Specialist Manufacturers of Ironmongery & Lighting



Step 1

Firstly, carefully unpack your product and make sure you have all the necessary components.

For this product you will need to make sure you have the pull handle plus two secret fix bolts with grommets and metal washers, which will be fixed to the surface of the door.



Step 2

Depending on which size of T Bar pull handle is chosen you will need to decide a position on the door. There is no right or wrong here, just place it where it will be most comfortable to use and where it looks the best.

Once chosen measure how far from the edge of the door you want the pull to sit and mark with pen/pencil. If, like the example above, you have a panel/stile then centre your handle in this area.



Step 3

Depending on the length of handle chosen you need to check your fixing centre measurement and mark the lower point on your door.

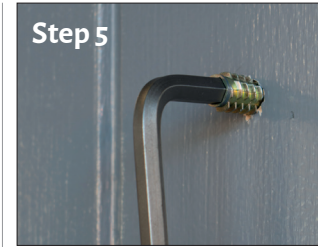
In this guide our handle is 900mm long and the fixing centres were 700mm apart. So the second mark we put on the door was 700mm below the mark we made in 'Step 2'. (please check website technical drawing for exact fixings for each product).



Step 4

The next step is to drill the holes needed to fit the grommets that come with the secret fixings. So it may be a good time to double check everything is centered and positioned how you want it.

Here we used a 10mm bit and drilled 22mm into the door. Be careful to make sure the hole is perfectly horizontal as you will need to insert the bolts into these grommets at the next step.



Step 5

Place the grommet over your 20mm deep hole in the surface of the door.

Insert a 8mm allen key into the grommet and begin to wind in a clockwise direction until the grommet sits flush with the surface of the door.



Step 6

Insert the bolt into the grommet and screw in until it no longer moves.

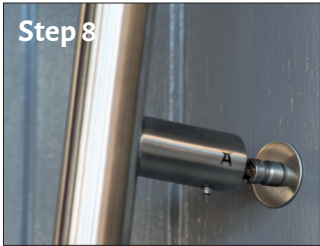
Make sure to fit the metal washer against the surface of the door.

Remove the rubber washer that comes with the fixings.



Step 7

Place the fixing sleeve over the M8 bolt and tighten until it secures the washer against the surface of the door.



Step 8

Using an allen key loosen the grub screw underneath the fixing arm and place the handle onto the exposed fixing sleeve.



Step 9

With the handle pushed tight against the surface of the door use the allen key to secure the grub screw onto the groove in the fixing sleeve.

Do not over tighten but securely fix and this will hold your product perfectly in place with no visible fixings to show.



T Bar Pull Handle - Secret Fix - Fitting Guide

Please note that this fitting guide is just that, a guide, and it requires a certain amount of competence in DIY skills to complete. If unsure about any part of this fitting then please consult a professional. There may be other methods to fit handles like these but we just try to offer simple to follow instructions to help you through.