

# T Bar Pull Handles

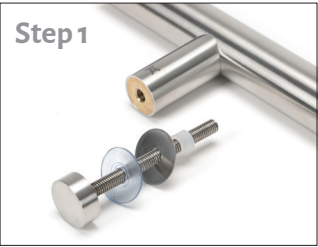
## The Complete Guide

Helping you fitting the right product  
for your needs.



- Contents**
- T Bar Pull Handle - Bolt-through Fix - Fitting Guide
  - T Bar Pull Handle - Secret Fix - Fitting Guide
  - T Bar Pull Handle - Back-to-Back Fix - Fitting Guide

From the  
**Anvil**<sup>®</sup>  
Specialist Manufacturers of Ironmongery & Lighting



Step 1  
Firstly, carefully unpack your product and make sure you have all the necessary components.

For this product you will need to make sure you have the pull handle plus two matching bolts, which will be fixed to the opposite side of the door.



Step 2  
Depending on which size of T Bar pull handle is chosen you will need to decide a position on the door. There is no right or wrong here, just place it where it will be most comfortable to use and where it looks the best.

Once chosen measure how far from the edge of the door you want the pull to sit and mark with pen/pencil. If, like the example above, you have a panel/stile then centre your handle in this area.



Step 3  
Depending on the length of handle chosen you need to check your fixing centre measurement and mark the lower point on your door.

In this guide our handle is 900mm long and the fixing centres were 700mm apart. So the second mark we put on the door was 700mm below the mark we made in 'Step 2'. (please check website technical drawing for exact fixings for each product).



Step 4  
The next step is to drill the holes needed to fit the bolt-through fixings. So it may be a good time to double check everything is centered and positioned how you want it.

Here we used a 10mm bit and drilled through the entire thickness of the door. Be careful to make sure the hole you are drilling is perfectly horizontal as you will need to pass the bolts through this at the next step.



Step 5  
Once both holes have been drilled pass the bolt through the hole using the metal washer and bolt end (if using on a glass door the rubber pads must be used first then the metal washers).

If installing on a timber door the glass protector pads will not be required.



Step 6  
Place one end of the pull handle over the protruding threaded bolt and proceed to manually turn the bolt until it stops.

Depending on the thickness of your door you may need to cut some of the bolt away using a hacksaw but this is a good way to determine how much bolt to remove.



Step 7  
Using a tape measure check the amount which will need to be removed from the bolt.

Remove the bolt from the door and proceed to cut away any excess length with a hacksaw. We suggest you do this using a vice to grip the bolt and to help in the process.

Do the same to the second bolt also.



Step 8  
Once cut down to the required length proceed to pass your bolts through the door, not forgetting to use the metal washers as before and begin to hand tighten the bolts into the handle stems.

Do this for both bolts until you can no longer tighten them any more.



Step 9  
There is a small hole on each of the bolt heads where you can fit an allen key and begin to rotate the bolt to give that final tighten and create the perfect fit.

Ideally the hole should then be positioned at the underside of the bolt head.



Step 10  
Check the fixing is tight enough on the top bolt.



Step 11  
And also the bottom bolt.



## T Bar Pull Handle - Bolt-Through Fix - Fitting Guide

Please note that this fitting guide is just that, a guide, and it requires a certain amount of competence in DIY skills to complete. If unsure about any part of this fitting then please consult a professional. There may be other methods to fit handles like these but we just try to offer simple to follow instructions to help you through.

### Step 1



Firstly, carefully unpack your product and make sure you have all the necessary components.

For this product you will need to make sure you have the pull handle plus two secret fix bolts with grommets and metal washers, which will be fixed to the surface of the door.

### Step 2



Depending on which size of T Bar pull handle is chosen you will need to decide a position on the door. There is no right or wrong here, just place it where it will be most comfortable to use and where it looks the best.

Once chosen measure how far from the edge of the door you want the pull to sit and mark with pen/pencil. If, like the example above, you have a panel/stile then centre your handle in this area.

### Step 3



Depending on the length of handle chosen you need to check your fixing centre measurement and mark the lower point on your door.

In this guide our handle is 900mm long and the fixing centres were 700mm apart. So the second mark we put on the door was 700mm below the mark we made in 'Step 2'. (please check website technical drawing for exact fixings for each product).

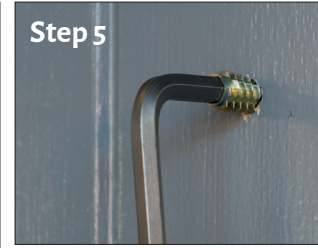
### Step 4



The next step is to drill the holes needed to fit the grommets that come with the secret fixings. So it may be a good time to double check everything is centered and positioned how you want it.

Here we used a 10mm bit and drilled 22mm into the door. Be careful to make sure the hole is perfectly horizontal as you will need to insert the bolts into these grommets at the next step.

### Step 5



Place the grommet over your 20mm deep hole in the surface of the door.

Insert a 8mm allen key into the grommet and begin to wind in a clockwise direction until the grommet sits flush with the surface of the door.

### Step 6



Insert the bolt into the grommet and screw in until it no longer moves.

Make sure to fit the metal washer against the surface of the door.

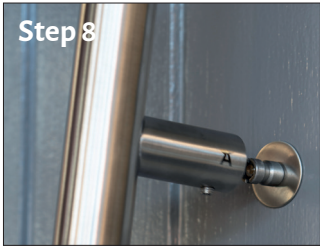
Remove the rubber washer that comes with the fixings.

### Step 7



Place the fixing sleeve over the M8 bolt and tighten until it secures the washer against the surface of the door.

### Step 8



Using an allen key loosen the grub screw underneath the fixing arm and place the handle onto the exposed fixing sleeve.

### Step 9



With the handle pushed tight against the surface of the door use the allen key to secure the grub screw onto the groove in the fixing sleeve.

Do not over tighten but securely fix and this will hold your product perfectly in place with no visible fixings to show.



## T Bar Pull Handle - Secret Fix - Fitting Guide

Please note that this fitting guide is just that, a guide, and it requires a certain amount of competence in DIY skills to complete. If unsure about any part of this fitting then please consult a professional. There may be other methods to fit handles like these but we just try to offer simple to follow instructions to help you through.



**Step 1**

Firstly, carefully unpack your product and make sure you have all the necessary components.

For this product you will need to make sure you have the two pull handle plus two back-to-back fixing bolts, which will be drilled through the door and join the two handles either side together.



**Step 2**

Depending on which size of T Bar pull handle is chosen you will need to decide a position on the door. There is no right or wrong here, just place it where it will be most comfortable to use and where it looks the best.

Once chosen measure how far from the edge of the door you want the pull to sit and mark with pen/pencil. If, like the example above, you have a panel/stile then centre your handle in this area.



**Step 3**

Depending on the length of handle chosen you need to check your fixing centre measurement and mark the lower point on your door.

In this guide our handle is 900mm long and the fixing centres were 700mm apart. So the second mark we put on the door was 700mm below the mark we made in 'Step 2'. (please check website technical drawing for exact fixings for each product).



**Step 4**

The next step is to drill the holes needed to fit the back-to-back fixings. So it may be a good time to double check everything is centered and positioned how you want it.

Here we used a 10mm bit and drilled through the entire thickness of the door. Be careful to make sure the hole you are drilling is perfectly horizontal as you will need to pass the bolts through this at the next step.



**Step 5**

Once both holes have been drilled pass the bolt through the hole using the metal washer (if using on a glass door the rubber pads must be used first then the metal washers).

If installing on a timber door the glass protector pads will not be required.



**Step 6**

Place one end of the pull handle over the protruding threaded bolt and proceed to manually turn the bolt until it stops.

Depending on the thickness of your door you may need to cut some of the bolt away using a hacksaw but this is a good way to determine how much bolt to remove.



**Step 7**

Using a tape measure check the amount which will need to be removed from the bolt.

Remove the bolt from the door and proceed to cut away any excess length with a hacksaw. We suggest you do this using a vice to grip the bolt and to help in the process.

Do the same to the second bolt also.



**Step 8**

Taking the pull handle which doesn't have the grub screw in the fixing arm, place the second metal washer over the threaded bolt, locate the bolt into the arm and screw in until tight.

Use a screw driver for this and not a battery operated driver as you may damage the threads.

Do this for both bolts and the handle will then be fixed to one side of the door.



**Step 9**

Locate the two grub screws underneath the fixing arms of the second handle and loosen. Place the handle over the ends of the grooved bolts and hold securely in place.

Gently tighten the grub screw ensuring they are positioned in the grooves of the bolt. Do not over tighten but securely fix and this will hold your product perfectly in place with no visible fixings on show.



## T Bar Pull Handle - Back-to-back Fix - Fitting Guide

Please note that this fitting guide is just that, a guide, and it requires a certain amount of competence in DIY skills to complete. If unsure about any part of this fitting then please consult a professional. There may be other methods to fit handles like these but we just try to offer simple to follow instructions to help you through.